



# PAULTON JUNIOR SCHOOL

## NEWSLETTER



FRIDAY 9<sup>TH</sup> JANUARY 2026

### Learning Together, Learning For Life

Our Paulton Junior School 6R Values

RESPECT RESOURCEFUL RESILIENCE REASONING RESPONSIBILITY REFLECTIVE

#### Diary Dates

Monday 5<sup>th</sup> January – INSET DAY

Tuesday 6<sup>th</sup> January – Term 3 Begins

Monday 12<sup>th</sup> January – Young Voices rehearsal 3-4pm

Wednesday 14<sup>th</sup> January – Young Voices Concert

Monday 19<sup>th</sup> January - Clubs start for 8 weeks (see below for details)

Wednesday 28<sup>th</sup> January – Year 4 trip to Bristol Museum

Thursday 5<sup>th</sup> February – Year 6 Trip to Holburne Museum

Monday 9<sup>th</sup> – Friday 13<sup>th</sup> February – Year 6 Camp Skern Lodge

Friday 13<sup>th</sup> February – End of Term 3

Monday 23<sup>rd</sup> February – Term 4 Begins



**Happy New Year!** It has been so lovely to welcome the children back this week—they have been very excited to see their friends and chat about the Christmas break. At the Inset day, the teachers and teaching assistants met with the other Bath Maintained Schools to learn more about the oracy project -Voice 21- that we are involved with and implementing into lessons. We also had training from the B&NES SEND team and were inspired by the founder of a local charity 'I am and I can'. James Shore spoke about the challenges he has encountered due to health setbacks, however this has not deterred him in his quest to empower young people. We hope to organise a visit from their double decker, charity bus in the future.

Term 3 has an exciting curriculum and some super events to look forward to. If you need any details regarding your child's year group, please use the school website to find out more information.

[www.paultonjuniorschool.co.uk](http://www.paultonjuniorschool.co.uk)

#### Connect Bath Christmas Cards

Last term we took part in Connect Bath's charity Christmas card project where local schools create cards to be given out locally to people who ordinarily might not receive anything at Christmas. Each card was individually designed with a hand-written message and we were so impressed with the work and creativity each child put into their designs. We have had feedback from two cards that we know were given out to patients at the RUH and were very much appreciated.



Connect Bath choose eight winning designs each year to help with fund-raising for the following year and the cards can be ordered as ecards.

Congratulations to Amber-Rose Year 6 and Darcey Year 4 on your winning designs. They can be viewed and sent as ecards on the Connect Bath website: <https://www.connect-bath.org/cards>

### **READY - RESPECTFUL – SAFE**

This term we have launched our new school rules: Ready, Respectful, Safe alongside our Behaviour Buddies. These 3 words encompass our school expectation and are constantly referred to throughout the school day by all members of staff. We introduced these to the children on Tuesday in a whole school assembly and we have had class circle time assemblies to unpick each rule in detail. This will continue to grow throughout the school year and we hope parents and carers can use them at home too.



### **Governing Body**

Our school's Chair of Governors – Simon Memory has decided to step down from the role after 15 years of being a governor, 9 years as the Chair. On behalf of the governing body, I would like to share my thanks to him, for all the years of dedication and commitment to Paulton Junior School. He started as a parent governor, when his children attended the school and continued even after they left.

To replace the Chair of Governors, we are pleased to welcome Sophie Addison, who has lots of experience in education as she is an Executive Headteacher for SEND/Inclusion within the MSNP. A Vice-Chair will be elected and announced shortly.

Our governing body now consists of – Sophie Addison, Hannah Rutt, Grant Johnson, Janner Breeze-Crow, Andrew Dix, Liz Church, Abbie Edgell. The clerk- Amanda Fenton.

Our school governors are volunteers from a range of different backgrounds, skills and experience who all share a common interest in striving for the best possible education, for the children in our school.

If you are interested in finding out more about becoming a governor of the school, please contact the school office 01761 418137 or email the Chair of Governors [chair.governor@paultonjuniorschool.co.uk](mailto:chair.governor@paultonjuniorschool.co.uk)

### **Extra- Curricular clubs**

Next week, you will receive a form and the list of clubs that are available for your child to choose and return to school. By the end of the week, they will be informed of which clubs they will be attending.

**Extra- Curricular clubs** at lunchtime and after school, **start week beginning Monday 19<sup>th</sup> January for 4 weeks. They will continue for 4 weeks from 23<sup>rd</sup> February in Term 4.** This is a commitment and there is an expectation that if your child has signed up for a club, they need to attend or send their apologies. The staff take time to plan the sessions and create the opportunities for the children to enjoy taking part in such fun and engaging activities.

### **Healthy snacks, packed lunches & allergies**

All children are encouraged to bring a healthy snack to eat at breaktime. Having a snack mid-morning helps the child to feel energised and providing a consistent "refuel" for both the body and brain. If you send your child to school with a healthy snack, this should be something like a piece of fruit, cheese or a cereal bar to go into their drawer, on arrival at school. Please do not send children with chocolate biscuits or crisps for snack time.



We also teach and promote healthy packed lunches. It is great to see that some children bring in wraps, sandwiches, warm soup or pasta in flasks and an array of cut up fruit.

**\*\*\*PLEASE REMEMBER NO NUTS \*\*\*** there are children in school with allergies to certain foods, including nuts. Please keep this in mind when packing lunch boxes and snacks.

## Open Door Friday

Open Door Friday is an opportunity for all parents/ carers to come into school to look at your child's learning. Once the children come out of school to greet you, please come into the classroom and celebrate and share the work that your child has been doing.

## Mobile phones and Smart devices



This is a reminder to everyone that personal smart devices- mobile phones, enabled fit-bit step trackers, watches that have any smart technology are **NOT** allowed in school. Thank you for supporting our decision and school policy to keep everyone safe.

## School Uniform Reminders

The weather has either been very chilly or raining a lot this week. Please can you make sure that children come to school wearing a warm, waterproof coat and wear sturdy school shoes. It is surprising how many pupils 'forget' to bring their coat! On PE days, pupils must wear their House T-shirt, navy or black leggings, school jumper/cardigan and trainers. All details of the school uniform are available on the website.



For safety- long hair must be tied up for PE and any jewellery removed. Children who wear earrings are asked to remove them or use tape to cover them up. The only jewellery permitted is a watch and stud earrings – no bracelets, rings, necklaces or hoop earrings. Nail varnish, false nails, make-up or hair colours are not permitted. Thank you for your support in meeting our standards.

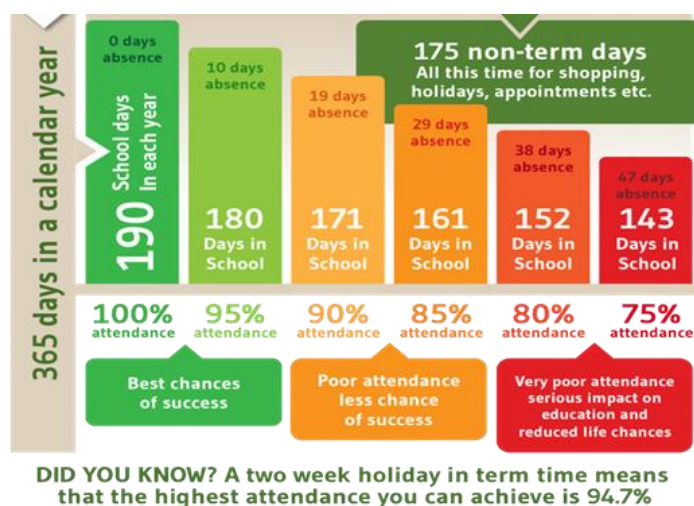
## PE Days

|               |   |
|---------------|---|
| <b>Year 3</b> | <u>Wednesday &amp; Friday</u>                 |
| <b>Year 4</b> | <u>Wednesday Swimming &amp; Friday</u>        |
| <b>Year 5</b> | <u>Monday &amp; Wednesday 5R Thursday 5CG</u> |
| <b>Year 6</b> | <u>Monday &amp; Tuesday</u>                   |

## Attendance

Our aspiration is for everyone at Paulton Junior School to attend for more than at least 96% of the year. If your child's attendance falls below 95% then evidence suggests, they are likely to fall behind. Days off add up to lost learning.

Even if your child's attendance is at 95% this will mean they have missed 40 lessons in one year. Children should not be taken on holiday in term time; this will be unauthorised and a Penalty Notice may be issued. B&NES Attendance and Welfare and the governors work closely with the school to monitor and evaluate the impact of good and poor attendance. If your child's attendance is a concern to you or the school, a meeting may be arranged to discuss.



## Medicines

If your child takes medication-including asthma inhalers, please let the office know. All medicines must be labelled, handed in to an office staff member and permission slips MUST be completed, before any can be administered.

**Wessex Water Visit** Years 6, 5, and 4 have had a visit from an educational advisor providing workshops on various aspects of water usage and rivers. Year 4, practically investigated how to slow down the course of a river, as well as learnt about how to reduce water consumption and the health of our rivers and why they are so important as a habitat. The children really enjoyed the opportunity to be part of these interactive workshops and learn new knowledge.



## Save Our Village Café

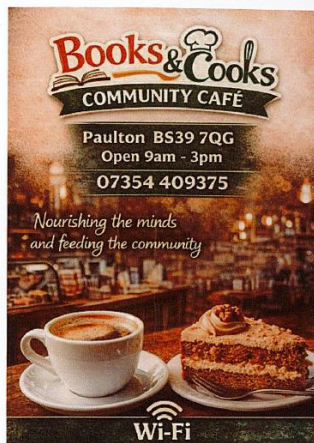
### at the Heart of Our Community

In the heart of Paulton (next to the co-op/post office) sits a place that is more than just a café - it is a gathering spot, a meeting place, and a home away from home. Our village café has been a cornerstone of community life for years, welcoming generations of residents with warm smiles, fresh coffee, and a sense of belonging. But it faces a threat that could close its doors forever.

The challenges are real. Rising costs, economic pressures but we, the community, have the power to make a difference. By supporting our café through regular visits and sharing its story, to ensure that it continues to thrive for years to come.

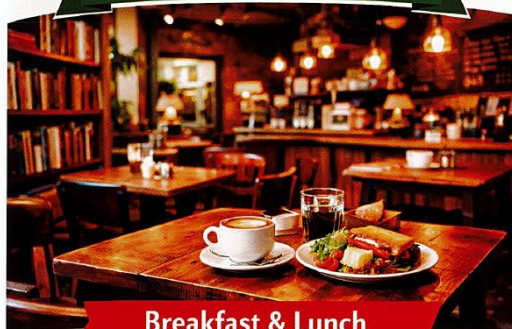
We are calling on everyone – residents, friends, and visitors – to come together and show support. Every cup of coffee, every meal shared, and every moment spent in the café counts.

If you have a skill that could help, or ideas for events we could host in the café, please get in touch with our parish clerk <clerk@paultonparishcouncil.gov.uk>.



## Books and Cooks

### Paulton Community Cafe



Breakfast & Lunch

Takeaway Orders

Free Wifi

Open 9am - 3pm

High Street, Paulton, BS39 7QG

– 07354 409375 –



## DISCOVERY DAYS

at WEMA Music Centres

Our free-of-charge Discovery Days are the perfect chance to try out our Music Centres, meet new friends, and experience the fun of playing in an ensemble. Bring your enthusiasm and see where music can take you!

Ensembles available for a wide variety of instruments, ages and playing levels.



Sign up using the QR code or visit:  
[wema.org.uk/wema-music-centres](http://wema.org.uk/wema-music-centres)

